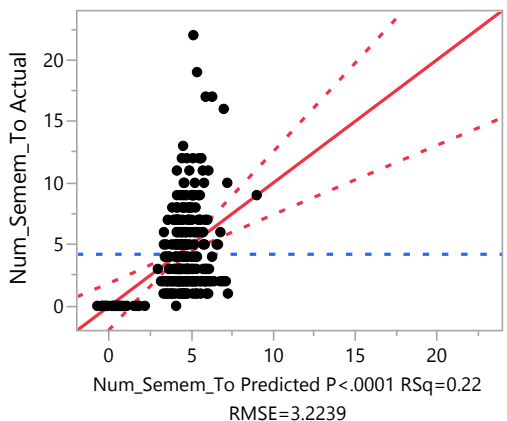


**Response Num\_Semem\_To**

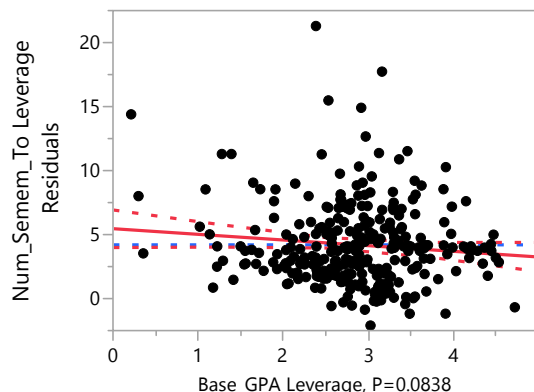
**Whole Model**

**Actual by Predicted Plot**



**Base\_GPA**

**Leverage Plot**



**Summary of Fit**

RSquare	0.2248
RSquare Adj	0.202887
Root Mean Square Error	3.223866
Mean of Response	4.208904
Observations (or Sum Wgts)	292

**Analysis of Variance**

Source	DF	Sum of Squares	Mean Square	F Ratio	Prob > F
Model	8	852.9505	106.619	10.2584	
Error	283	2941.3064	10.393		<b>Prob &gt; F</b>
C. Total	291	3794.2568			<b>&lt;.0001*</b>

**Parameter Estimates**

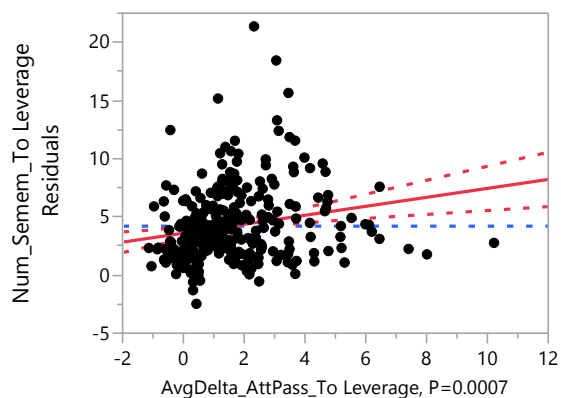
Term	Estimate	Std Error	t Ratio	Prob> t
Intercept	0.8750024	1.242508	0.70	0.4819
Base_GPA	-0.441215	0.254257	-1.74	0.0838
AvgDelta_AttPass_To	0.3852003	0.112327	3.43	<b>0.0007*</b>
AvgProGpa_To	1.3055033	0.184867	7.06	<b>&lt;.0001*</b>
Age	0.0861026	0.032119	2.68	<b>0.0078*</b>
Race[Asian]	-0.745413	0.844417	-0.88	0.3781
Race[Black]	-0.288378	0.766182	-0.38	0.7069
Race[Hispanic]	-1.485932	0.754526	-1.97	<b>0.0499*</b>
Race[Indian]	3.8309243	2.642778	1.45	0.1483

**Effect Tests**

Source	Nparm	DF	Sum of Squares	F Ratio	Prob > F
Base_GPA	1	1	31.29739	3.0113	0.0838
AvgDelta_AttPass_To	1	1	122.22551	11.7600	<b>0.0007*</b>
AvgProGpa_To	1	1	518.31133	49.8697	<b>&lt;.0001*</b>
Age	1	1	74.68975	7.1863	<b>0.0078*</b>
Race	4	4	75.66710	1.8201	0.1250

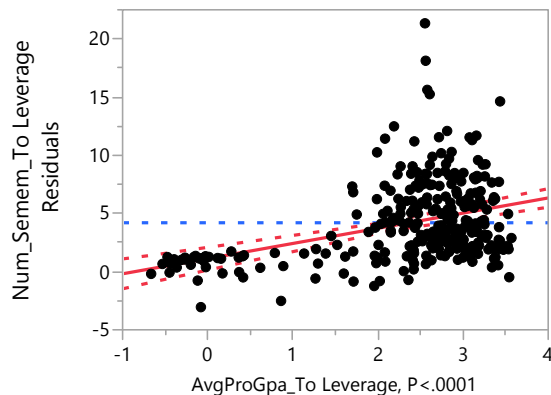
**AvgDelta\_AttPass\_To**

**Leverage Plot**



**AvgProGpa\_To**

**Leverage Plot**

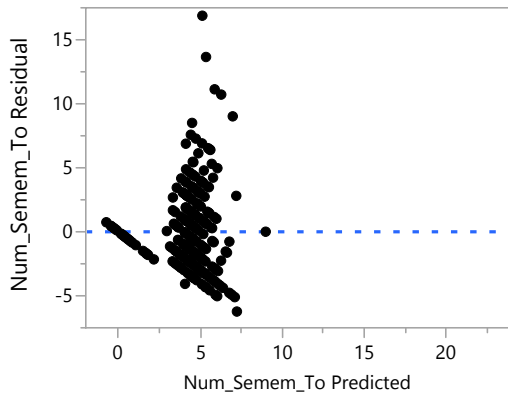


**Age**

**Response Num\_Semem\_To**

**Whole Model**

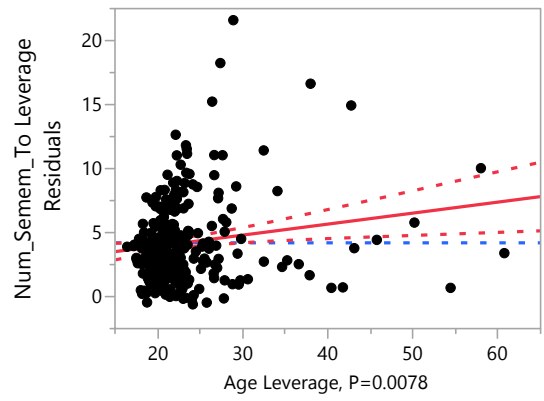
**Residual by Predicted Plot**



**AvgProGpa\_To**

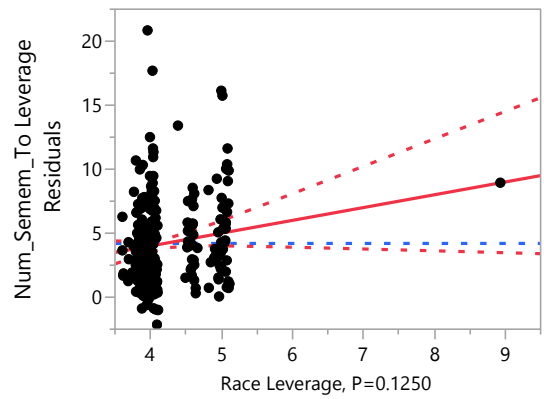
**Age**

**Leverage Plot**



**Race**

**Leverage Plot**



**Least Squares Means Table**

Level	Least		Mean
	Sq Mean	Std Error	
Asian	4.5614274	0.6244456	4.96296
Black	5.0184629	0.4533007	4.74510
Hispanic	3.8209089	0.4205469	3.76271
Indian	9.1377650	3.2943160	9.00000
White	3.9956394	0.2599727	4.03896